



ANVIL
HOMES

FAIRFIELDS

AT
HAYTON

*Nine individually designed
detached houses, on the
outskirts of the highly desirable
village of Hayton in Cumbria.*

LANGDALE
HOUSE

9 NEW HOMES
FOR 2023

WWW.ANVILHOMES.COM



FAIRFIELDS

NINE CUSTOM BUILT, DETACHED FAMILY HOMES

Anvil Homes is proud to present this one-of-a-kind development of nine individually designed detached houses, located on the tranquil outskirts of the sought-after village of Hayton in the beautiful county of Cumbria. This exclusive project offers a breathtaking collection of four bedroom homes, all built on spacious plots, providing ample space and privacy for families and individuals alike.

Each property is meticulously crafted with the signature Anvil Homes style, blending classic four-square design with traditional stone and slate and incorporating elegant sliding sash windows. The homes are finished to a superb standard, with an exceptional attention to detail, and are equipped with premium quality kitchens and luxurious bathrooms.

The development is not only situated in a stunning location, surrounded by rolling hills and stunning countryside, but it is also only a short 30-minute drive away from the iconic Lake District, offering residents the best of both worlds - peaceful rural living and easy access to one of England's most popular tourist destinations.

In addition to its prime location and stunning design, the homes are designed with energy efficiency in mind, featuring advanced air source heat pumps for heating and hot water, and high levels

of wall, floor, and roof insulation, resulting in an impressive Energy Efficiency rating of B.

Whether you are seeking a tranquil rural retreat or a family home with easy access to some of the UK's most popular tourist destinations, this exclusive development has something for everyone. With its unique blend of style, comfort, and location, this is a rare opportunity to secure a home in one of Cumbria's most desirable areas.

The picturesque village of Hayton benefits from a highly rated primary school, popular local pub, and nearby farm shop with tea rooms and a swimming pool. The thriving market town of Brampton is only a short five minute drive and offers excellent local amenities with a good range of shops, post office, chemist, doctor's surgery and dentist. The surrounding countryside offers excellent walks, Talkin Tarn Country Park lies 2 miles south-east of Brampton with a 65-acre lake set amid 120 acres of farmland and woodland and The RSPB nature reserve, Gelt Woods, is located approximately 2 miles south. Cumbria is also home to part of the historic Hadrian's Wall, the most important monument built by the Romans in Britain. Banks Turret can be found in nearby Brampton and Birdoswald Roman Fort is just a few miles away.



SITE MAP

1: LANGDALE HOUSE
2: TINDALE GRANGE
3: RYDAL LODGE
4: LONGLANDS
5: CONISTON GRANGE

6: CODALE LODGE
7: EASDALE HOUSE
8: LONGMOSS GRANGE
9: WHORTON LODGE

The thriving market town of Brompton offers excellent local amenities with a good range of shops, post office, chemist, doctor's surgery and dentist.

JUST A 30 MINUTE DRIVE
FROM THE LAKES





FAIRFIELDS | LANGDALE HOUSE

LANGDALE HOUSE

Completion due summer 2023

A spacious gravel driveway leads towards the detached oak framed car port. Stone flagged pathways take you to the front entrance and around the property with its stunning landscaped gardens, mainly laid to lawn with natural stone patio seating areas. The front door opens into the welcoming entrance hallway staircase featuring an oak balustrade and handrails leading up to the first floor, storage cupboard and cloakroom/WC. From the hallway a door takes you into the spacious kitchen/ dining room providing the perfect space for entertaining.

The kitchen exudes quality with bespoke furniture, integrated appliances, a central island, granite work surfaces and brushed chrome sockets and switches. There is also a useful utility room. The hallway, kitchen and utility rooms are tiled throughout, and all internal doors are oak.

The lounge is accessed from the kitchen and enjoys French doors opening out onto the landscaped gardens. This fabulous room incorporates a truly superb feature fireplace housing a multi fuel stove, and the sumptuous carpet gives the room an extra cosy feel.

The first floor includes a spacious master suite with bespoke dressing area and an en suite shower room comprising of a walk-in shower and contemporary fittings.

There are three further good-sized bedrooms and a spacious and contemporary family bathroom which includes both a free-standing bath and separate walk-in shower.

The property benefits from superfast fibre broad band with network cabling throughout and a dedicated car charging point.

LANGDALE HOUSE

REAR ELEVATION

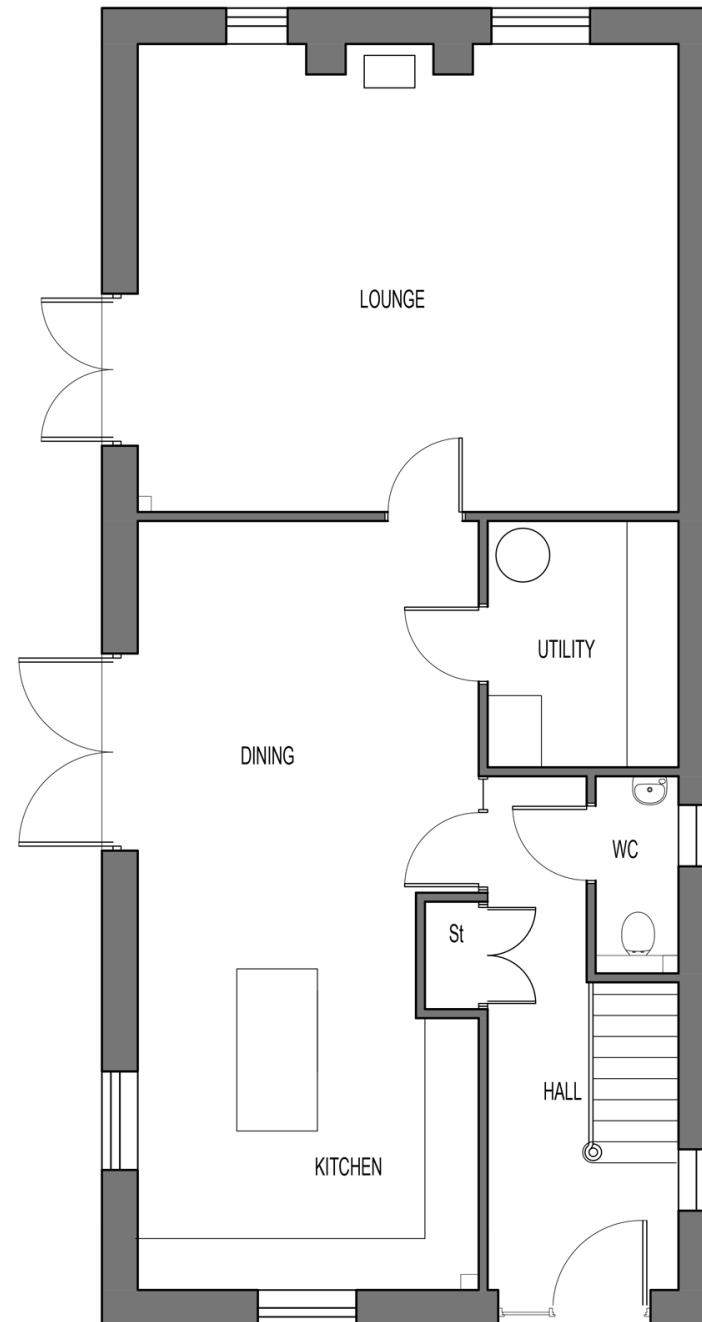
The property benefits from super-fast fibre broad band with network cabling throughout and a dedicated



LANGDALE HOUSE FLOOR PLANS

GROUND FLOOR PLAN

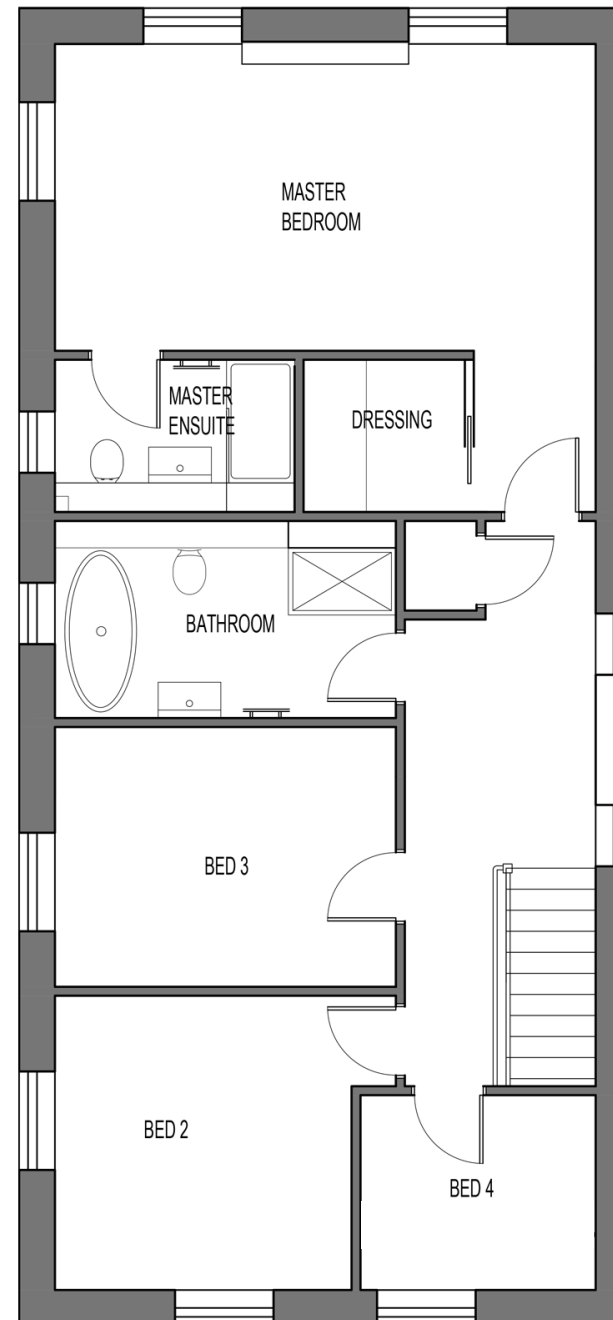
Kitchen	3805 x 3335 – 12'5" x 10'11"
Dining	3805 x 5250 – 12'5' x 17'2"
Lounge	6035 x 5225 – 19'9" x 17'1"
Utility	2130 x 2750 – 6'11" x 9'0"
Detatched Garage	5200 x 4950 – 17'0" x 16'2"



LANGDALE HOUSE FLOOR PLANS

FIRST FLOOR PLAN

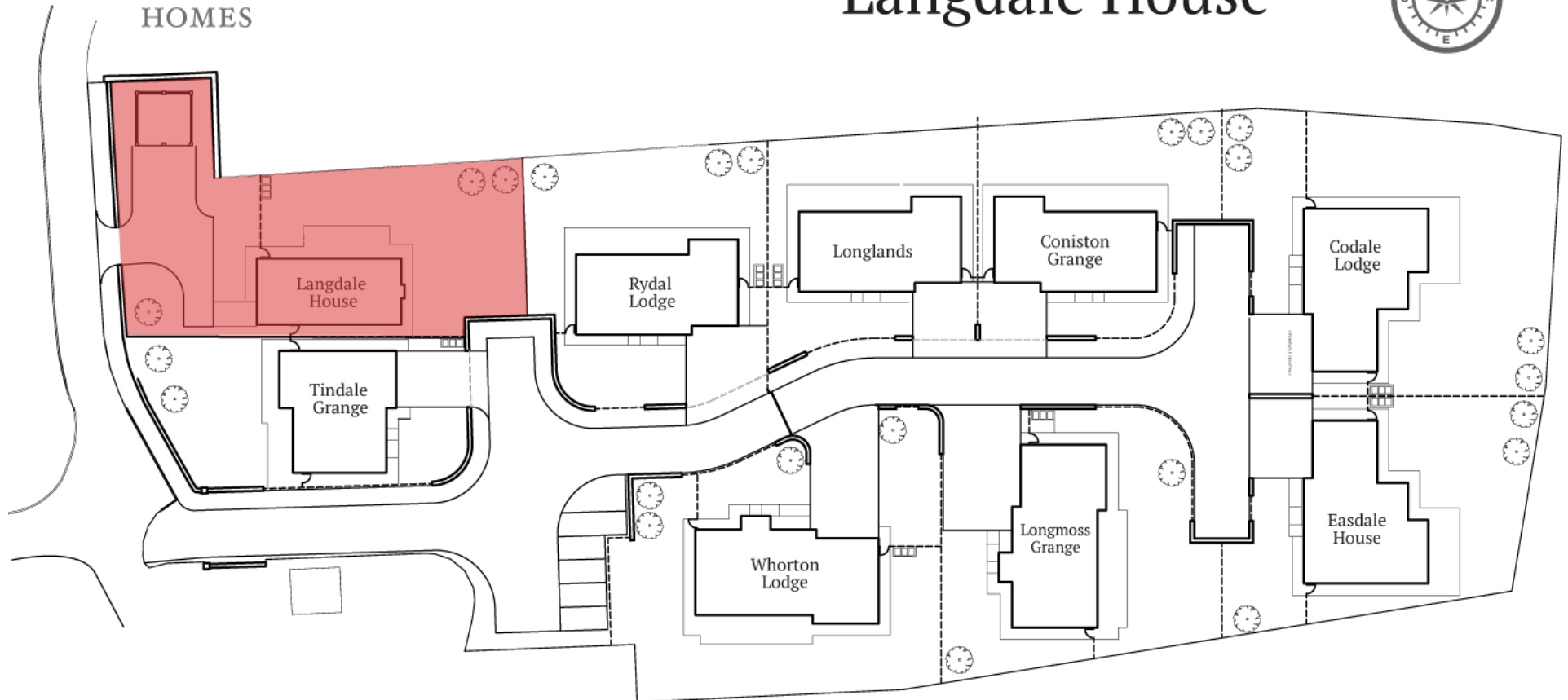
Master Bedroom	6035 x 3425 – 19'9" x 11'2"
Ensuite	2675 x 1700 – 8'9" x 5'6"
Bedroom 2	3310 x 3285 – 10'10" x 10'9"
Bedroom 3	3805 x 2900 – 12'5" x 9'6"
Bedroom 4	2625 x 2175 – 8'7" x 7'1"
Family Bathroom	3805 x 2200 – 12'5" x 7'2"



PLOT BOUNDARY FAIRFIELDS



Langdale House





youngsRPS 
CHARTERED SURVEYORS & PROPERTY CONSULTANTS

For more information
please contact - YoungsRPS :
Tel 01434 608980
www.youngsrps.com



H&H
Land & Estates

For more information
please contact - H & H Land Estates :
Tel: 01228 810799
Email: carlisle@hhlandestates.co.uk

*Disclaimer: Although every care has been taken to ensure the accuracy and illustration in this brochure, the contents do not form part of, or constitute, any representation, warranty or contract.
Any fixtures and fittings shown in the floor plans are for illustration purposes only.*



ANVIL
HOMES