



FAIRFIELDS

AT HAYTON

*Nine individually designed
detached houses, on the
outskirts of the highly desirable
village of Hayton in Cumbria.*

WHORTON LODGE

9 NEW HOMES
FOR 2023

WWW.ANVILHOMES.COM



FAIRFIELDS

NINE CUSTOM BUILT, DETACHED FAMILY HOMES

Anvil Homes is proud to present this one-of-a-kind development of nine individually designed detached houses, located on the tranquil outskirts of the sought-after village of Hayton in the beautiful county of Cumbria. This exclusive project offers a breathtaking collection of four bedroom homes, all built on spacious plots, providing ample space and privacy for families and individuals alike.

Each property is meticulously crafted with the signature Anvil Homes style, blending classic four-square design with traditional stone and slate and incorporating elegant sliding sash windows. The homes are finished to a superb standard, with an exceptional attention to detail, and are equipped with premium quality kitchens and luxurious bathrooms.

The development is not only situated in a stunning location, surrounded by rolling hills and stunning countryside, but it is also only a short 30-minute drive away from the iconic Lake District, offering residents the best of both worlds - peaceful rural living and easy access to one of England's most popular tourist destinations.

In addition to its prime location and stunning design, the homes are designed with energy efficiency in mind, featuring advanced air source heat pumps for heating and hot water, and high levels

of wall, floor, and roof insulation, resulting in an impressive Energy Efficiency rating of B.

Whether you are seeking a tranquil rural retreat or a family home with easy access to some of the UK's most popular tourist destinations, this exclusive development has something for everyone. With its unique blend of style, comfort, and location, this is a rare opportunity to secure a home in one of Cumbria's most desirable areas.

The picturesque village of Hayton benefits from a highly rated primary school, popular local pub, and nearby farm shop with tea rooms and a swimming pool. The thriving market town of Brampton is only a short five minute drive and offers excellent local amenities with a good range of shops, post office, chemist, doctor's surgery and dentist. The surrounding countryside offers excellent walks, Talkin Tarn Country Park lies 2 miles south-east of Brampton with a 65-acre lake set amid 120 acres of farmland and woodland and The RSPB nature reserve, Gelt Woods, is located approximately 2 miles south. Cumbria is also home to part of the historic Hadrian's Wall, the most important monument built by the Romans in Britain. Banks Turret can be found in nearby Brampton and Birdoswald Roman Fort is just a few miles away.



SITE MAP

1: LANGDALE HOUSE
2: TINDALE GRANGE
3: RYDAL LODGE
4: LONGLANDS
5: CONISTON GRANGE

6: CODALE LODGE
7: EASEDALE HOUSE
8: LONGMOSS GRANGE
9: WHORTON LODGE

The thriving market town of Brampton offers excellent local amenities with a good range of shops, post office, chemist, doctor's surgery and dentist.

JUST A 30 MINUTE DRIVE
FROM THE LAKES





FAIRFIELDS | WHORTON LODGE

WHORTON LODGE

Completion due early 2023

A timber gated entrance leads onto a spacious gravel driveway towards the integral double garage with electric up and over doors. Stone flagged pathways take you to the entrance and around the property with its stunning landscaped gardens, mainly laid to lawn with natural stone patio seating areas. This outwardly traditional stone property features high quality timber sliding sash windows and oak internal doors throughout.

The front door opens into the porch which leads through to the welcoming hallway with staircase featuring an oak balustrade and handrails leading up to the first floor and downstairs WC/cloakroom. There are two reception rooms including a study and a lounge. The lounge is a fabulous room which incorporates a truly superb feature fireplace housing a multi fuel stove, and the sumptuous carpet gives the room an extra cosy feel. French doors open out onto the landscaped garden where there are pleasant views across open countryside.

A door from the hallway entices you into the stunning kitchen/family room. This delightful room is dual aspect with bi-fold doors leading out to the landscaped garden. The kitchen exudes

quality with bespoke furniture, integrated appliances, a central island, granite work surfaces and brushed chrome sockets and switches.

Accessed via the kitchen is a useful and good-sized utility room/boot room with a door leading through to the garage. The hallway, kitchen and utility rooms are tiled throughout.

The first floor includes a spacious master suite with an en suite shower room comprising of a walk-in shower and contemporary fittings. There are three further double bedrooms and a spacious and contemporary family bathroom which includes both a bath and separate walk-in shower.

The property benefits from superfast fibre broad band with network cabling throughout and a dedicated car charging point.

WHORTON LODGE

REAR ELEVATION

*The property benefits from
superfast fibre broad band with
network cabling throughout and a
dedicated car charging point.*



WHORTON LODGE FLOOR PLANS

GROUND FLOOR PLAN

Kitchen/Family

Boot Room

Lounge

Study

Garage

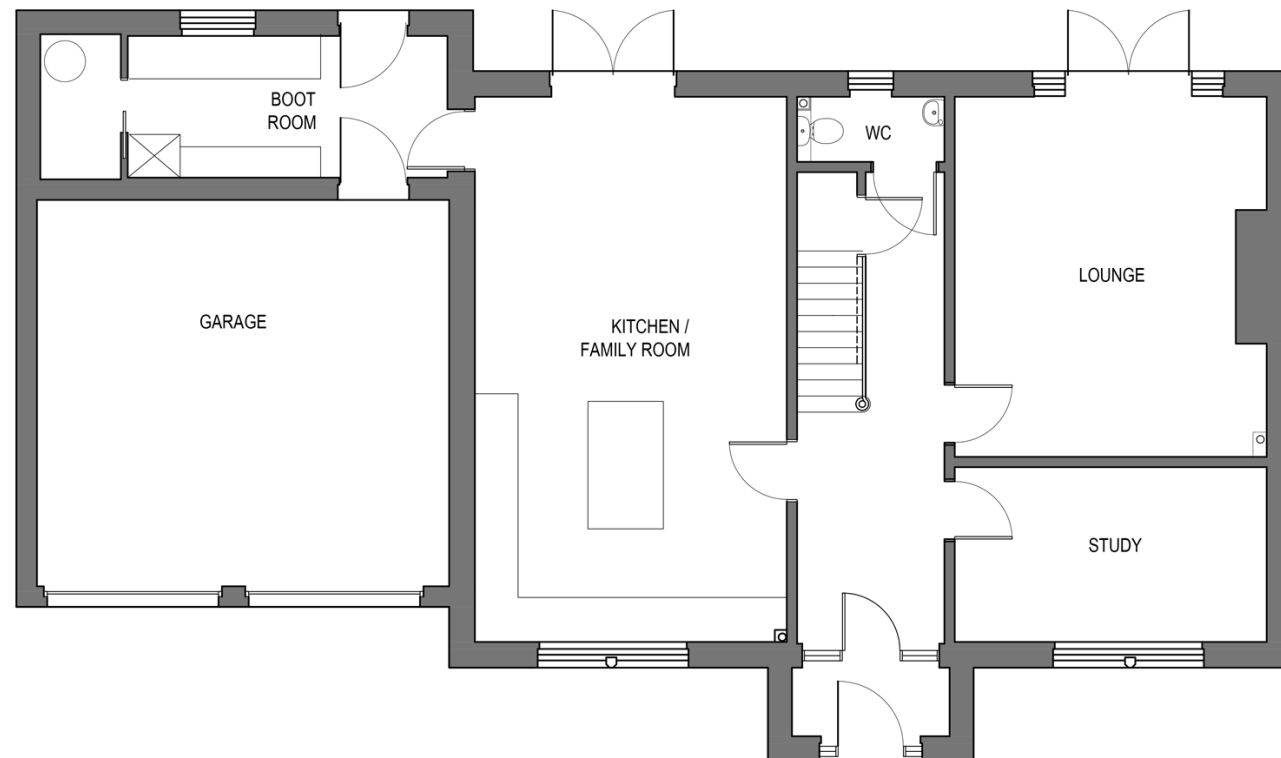
4522 x 7953 – 14'11" x 26'1"

4665 x 2067 – 15'3" x 6'9"

4552 x 5263 – 14'11" x 17'3"

4552 x 2550 – 14'11" x 8'4"

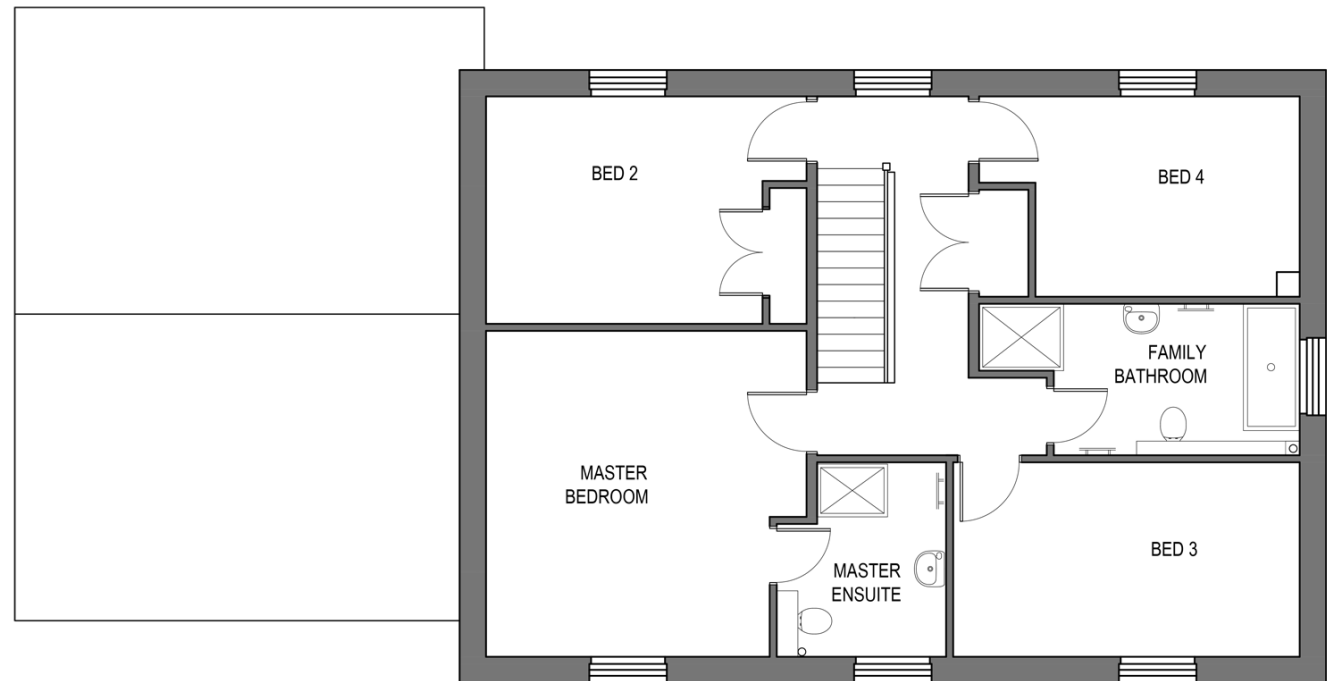
6.040 x 5.636 – 19'10" x 18'6"



WHORTON LODGE FLOOR PLANS

FIRST FLOOR PLAN

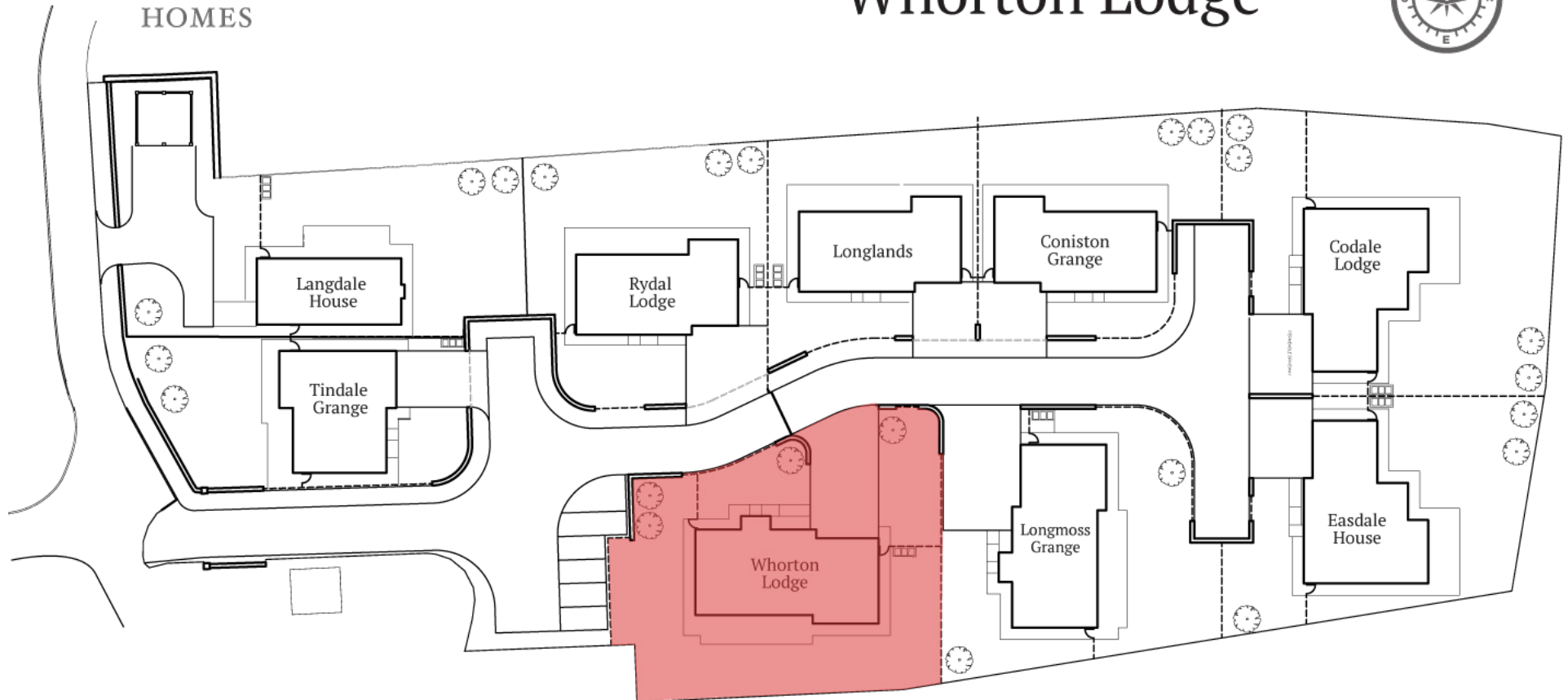
Master Bedroom	4552 x 4625 – 14'11" x 15'2"
Ensuite	2405 x 2760 – 7'10" x 9'
Bedroom 2	3926 x 3228 – 12'8" x 10'5"
Bedroom 3	4920 x 2760 – 16'1" x 9'
Bedroom 4	3777 x 2843 – 12'4" x 9'3"
Family Bathroom	3500 x 2150 – 11'5" x 7'



PLOT BOUNDARY WHORTON LODGE



Whorton Lodge





FINEST
PROPERTIES

For more information please contact :
01434 622234
finestproperties.co.uk

*Disclaimer: Although every care has been taken to ensure the accuracy and illustration in this brochure, the contents do not form part of, or constitute, any representation, warranty or contract.
Any fixtures and fittings shown in the floor plans are for illustration purposes only.*



ANVIL
HOMES